

Welcome! County of Essex



County Road 46/Concession Roads 8 and 9 Improvements

Welcome to the first Public Consultation Centre (PCC) for the County of Essex and Town of Tecumseh County Road 46 and Concession Roads 8 and 9 Improvements Environmental Assessment (EA) Study.

There is an opportunity at any time during the Class EA process for interested persons to provide comments. Early identification of individual and group concerns greatly aids in addressing these concerns.

Should you have any questions regarding the materials or any other aspect of the study, or if you would like to review any of the background reports, contact any of the following by **April 19, 2024**:

Steve Taylor, P.Eng., M.Eng.
Consultant Project Manager
BT Engineering Inc.
Email: stevenj.taylor@bteng.ca
Phone: 519-672-2222

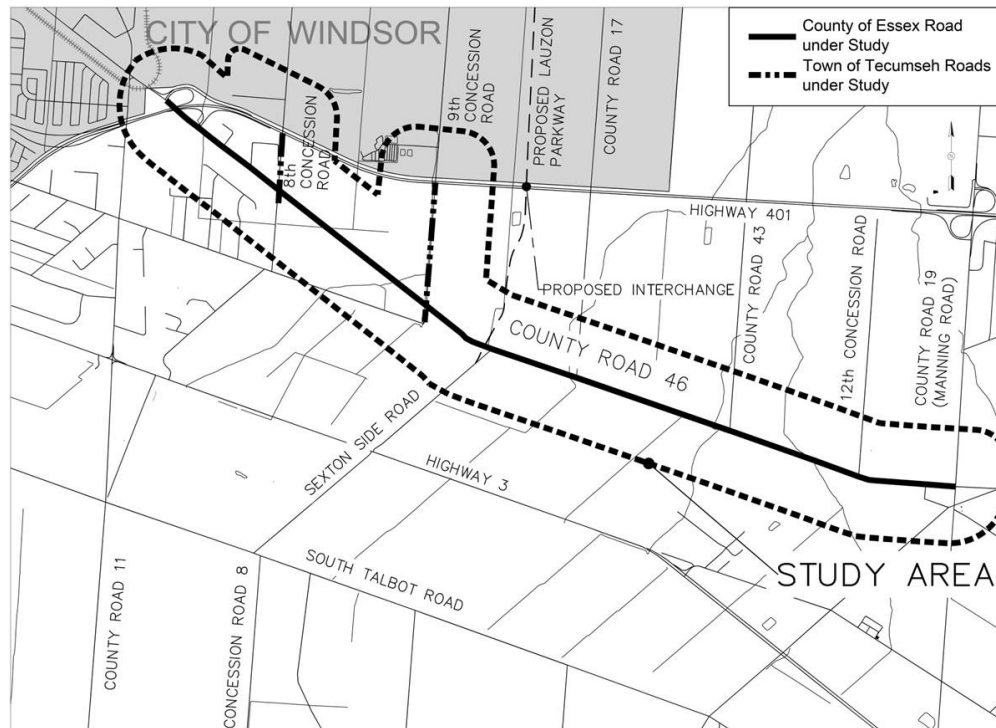
Jerry Behl, P.Eng., PMP, PTOE, RSP1
Manager, Transportation Planning & Development
County of Essex
Email: JBehl@countyofessex.ca

Alessia Mussio, P.Eng.
Engineering Project Manager
Town of Tecumseh
Email: amussio@tecumseh.ca
Phone: 519-735-2184, ext. 140

Introduction

The County of Essex in partnership with the Town of Tecumseh have retained BT Engineering Inc. (BTE) to complete an Environmental Assessment for County Road 46 (Provincial Road/North Talbot Road/Middle Road) from Highway 401 (City of Windsor municipal limits) to County Road 19 (Manning Road), and a schedule B class EA for Concession roads 8 and 9.

The study will evaluate alternatives to improve the operation and safety of the roadways.



Purpose of Public Consultation Centre No. 1

The purpose of this event is to engage the public/stakeholders on their perspectives and interests in the Study. We are looking to identify any issues and/or concerns from the public/stakeholders. The Study will proactively involve the public, stakeholders and Indigenous Peoples.

This PCC is presenting:

- A study introduction.
- An overview of the Municipal Class Environmental Assessment Process.
- The Need and Justification for the Study.
- A summary of work completed to date.
- A description of the existing conditions in the area.
- Alternative Solutions.
- Next Steps.

Municipal Class Environmental Assessment (Class EA) Process

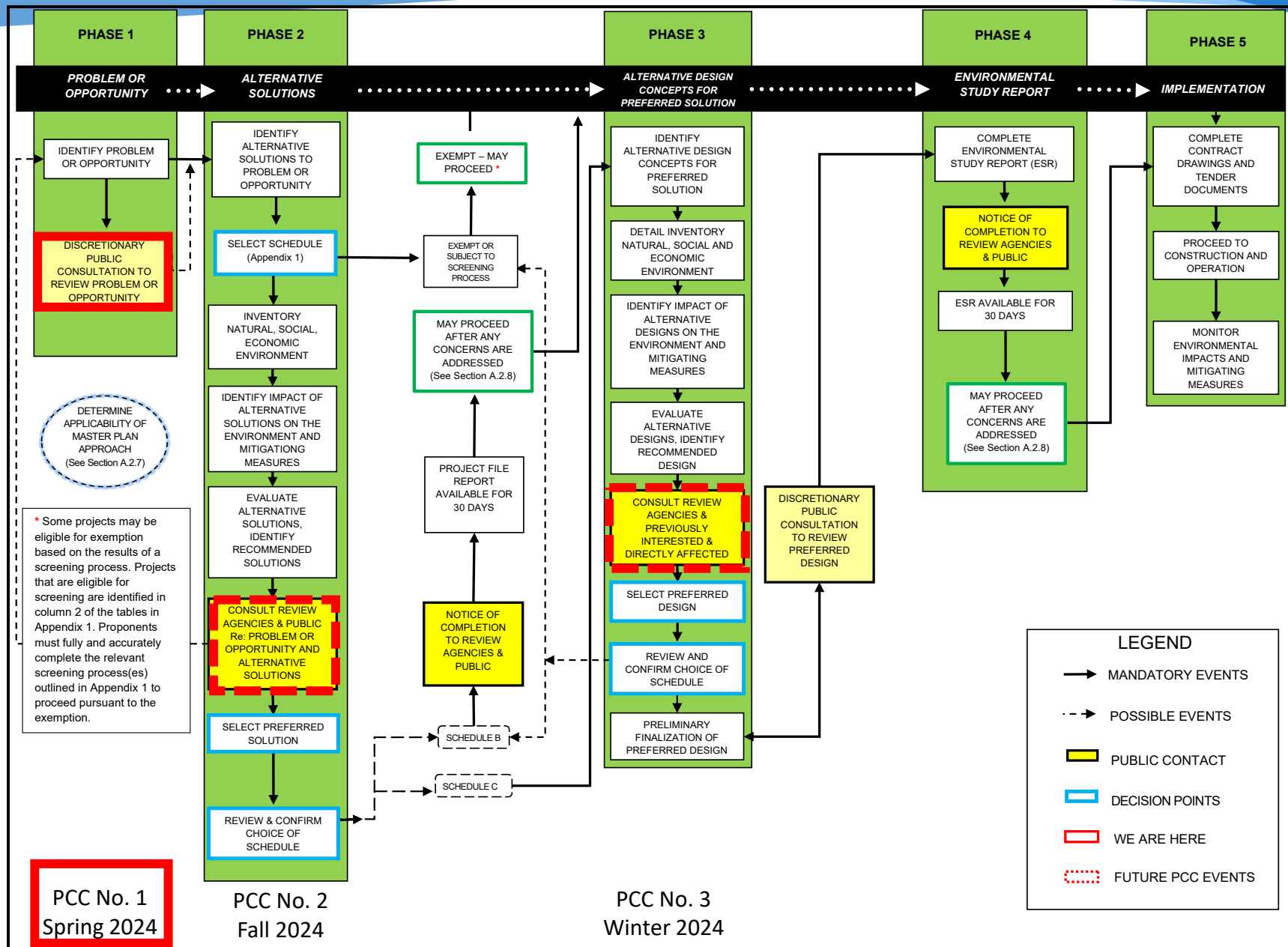


The Municipal Class Environmental Assessment (MCEA) process follows 5 phases, as shown in more detail in the next slide. We are currently in Phase 1. The final document will be the Environmental Study Report.

Two more PCC events will be held as part of this study. If after viewing the PCC exhibits and making your concerns known to the project team, you still have concerns at the time the Notice of Study Completion is published in the media and on the County/Town website, you will have the right to request the Minister of Environment, Conservation and Parks to undertake a higher level of assessment on the project based on two criteria:

- The need for a Part II Order, now referred to as a Section 16 Order, regarding potential adverse impacts to constitutionally protected Aboriginal and treaty rights.
- The need for additional assessment and evaluation of all other non-Aboriginal issues and concerns.

These rights and guidance on how to contact the Minister of Environment, Conservation and Parks will be described in the Notice of Study Completion at the end of the Study.



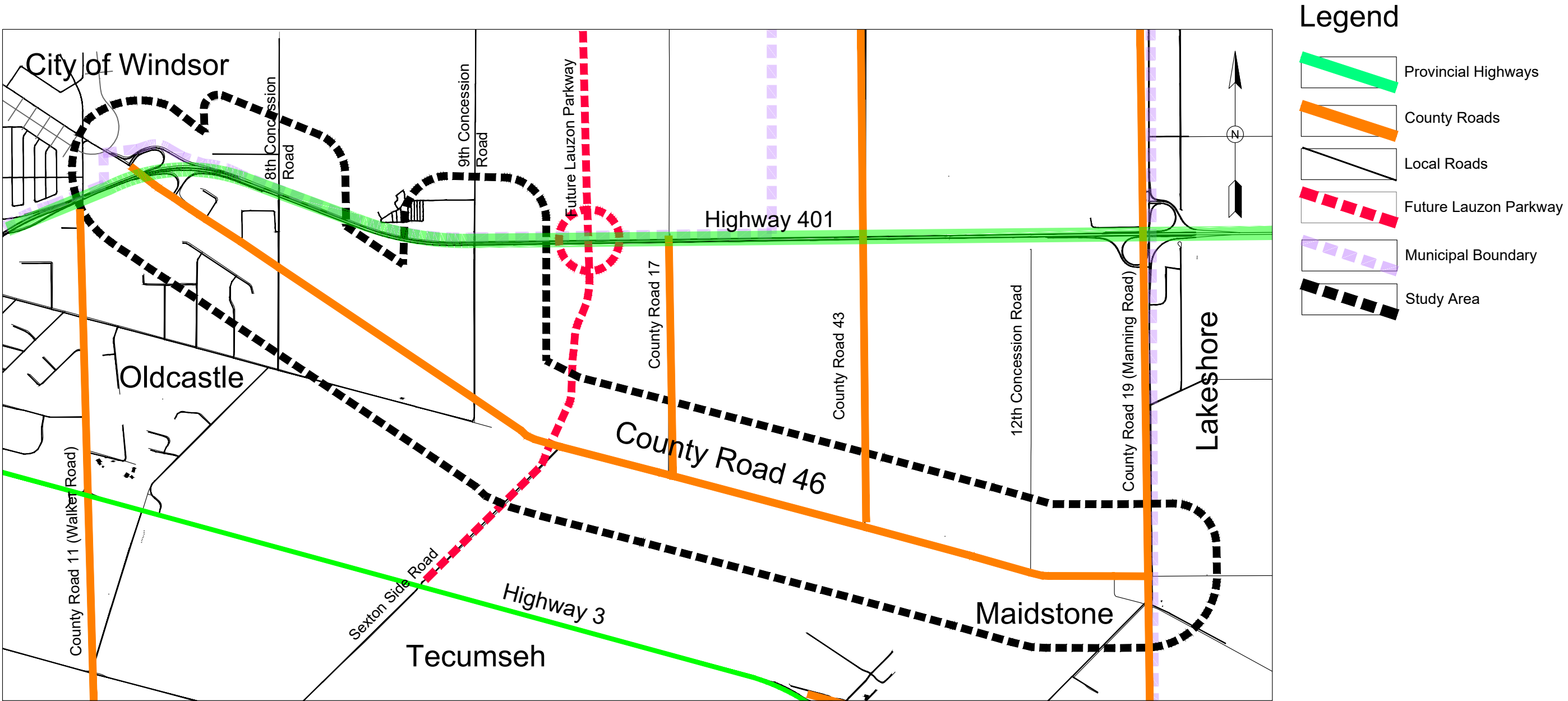
Needs and Justification

Road network improvements are required within the western sectors of the County to accommodate proposed development and improve traffic operations and safety.

The Study will provide an opportunity to:

- Improve efficiency of the roads considered.
- Improve access and reduce traffic delays.
- Implement active transportation policies and improvements consistent with the TMP and the County Wide Active Transportation System (CWATS).
- Assess current and projected traffic demands along County Road 46 and Concession Roads 8 and 9 to identify areas for improvement, such as intersection enhancements and capacity expansions.
- Consider road safety.

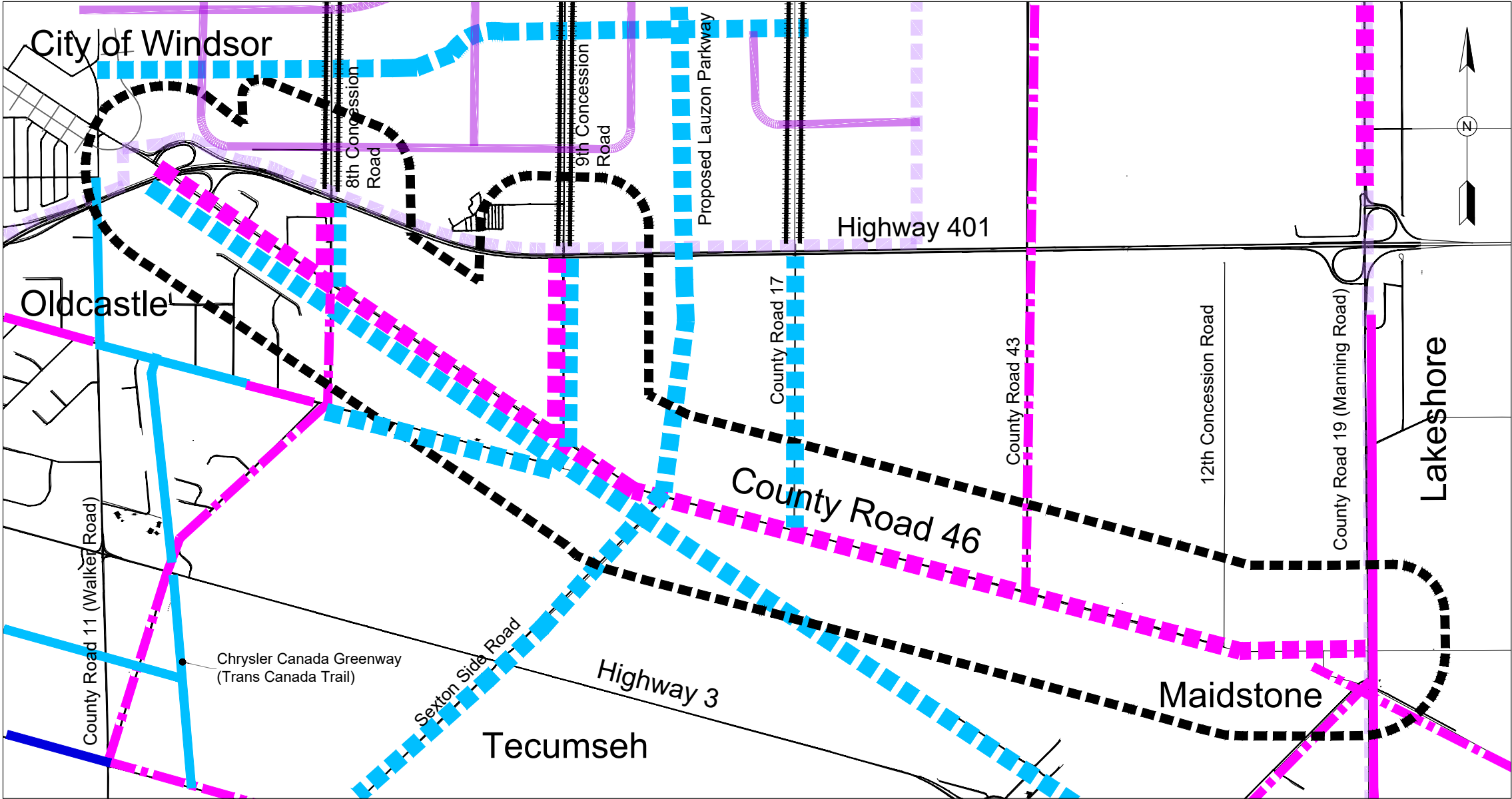
Existing and Proposed Transportation Network



County of Essex County Road 46 and
Town of Tecumseh Concession Roads 8 and 9
Environmental Assessment Study NTS

Sources:
1. County of Essex Official Plan, 2014:
1.1. Schedule D1 Road System, 2022.

Existing and Proposed Active Transportation Network



Legend

- Existing Paved Shoulder / CWATS On-Road Route
- Proposed Paved Shoulder / CWATS On-Road Route
- Existing Signed Route / CWATS On-Road Route
- Existing Multi-Use Trail / CWATS Off-Road Route
- Proposed Multi-Use Trail / CWATS Off Road Route
- City of Windsor Proposed Cycle Track
- City of Windsor Proposed Protected Bike Lane
- Municipal Boundary

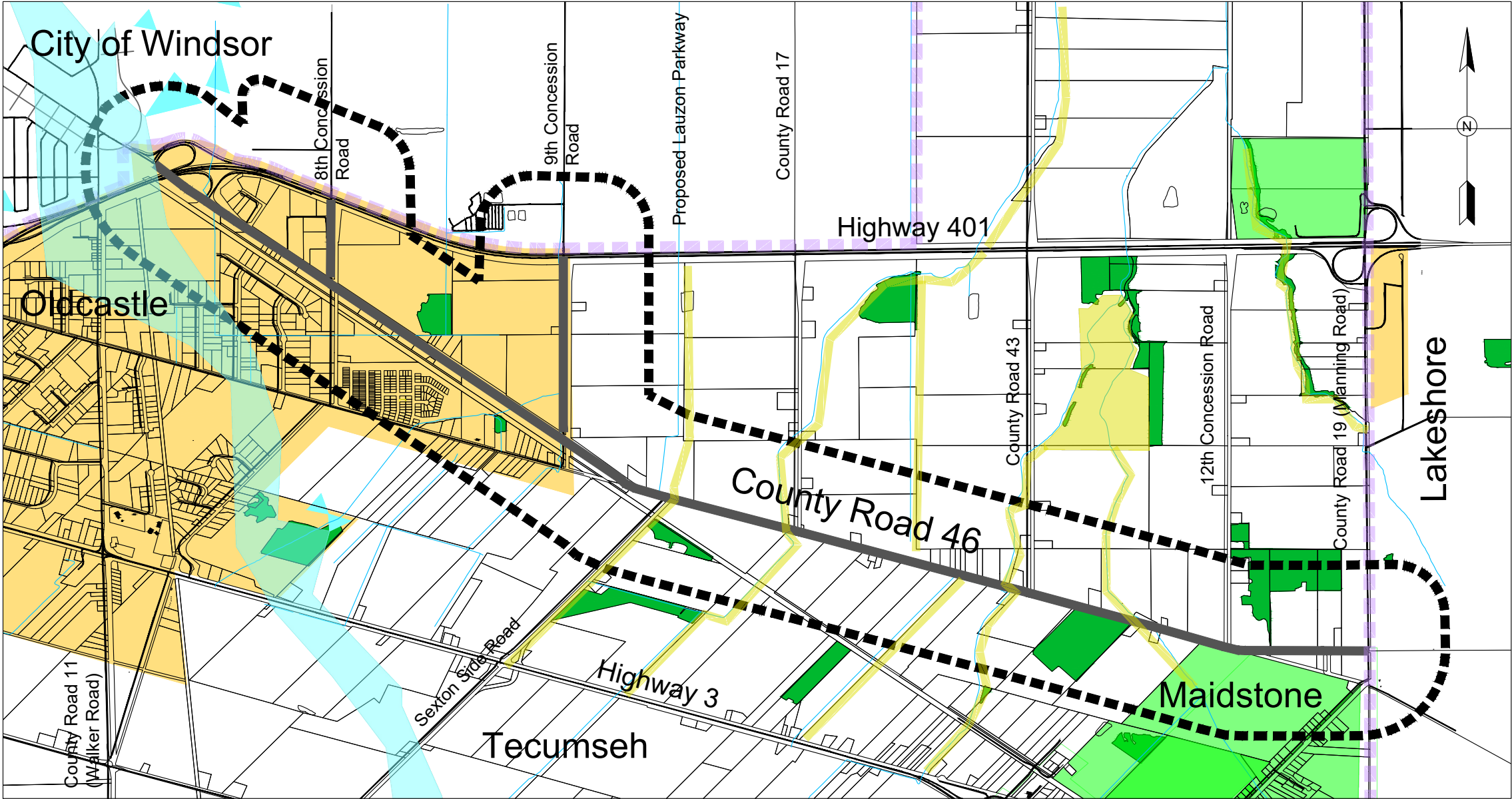


County of Essex County Road 46 and
Town of Tecumseh Concession Roads 8 and 9
Environmental Assessment Study NTS

CWATS: County Wide Active Transportation System

- Sources:
1. County of Essex Official Plan, Schedule D2
 2. Town of Tecumseh Official Plan, SCHEDULE "E-2"
 3. City of Windsor, Sandwich South Master Servicing Plan

County of Essex Official Plan Designations



Legend

- Natural Environment Overlay
- Secondary Restoration Opportunity Overlay
- Significant Groundwater Recharge Areas (Vulnerable - Low)
- Primary Settlement Areas
- Secondary Settlement Areas
- Municipal Boundary
- Study Area

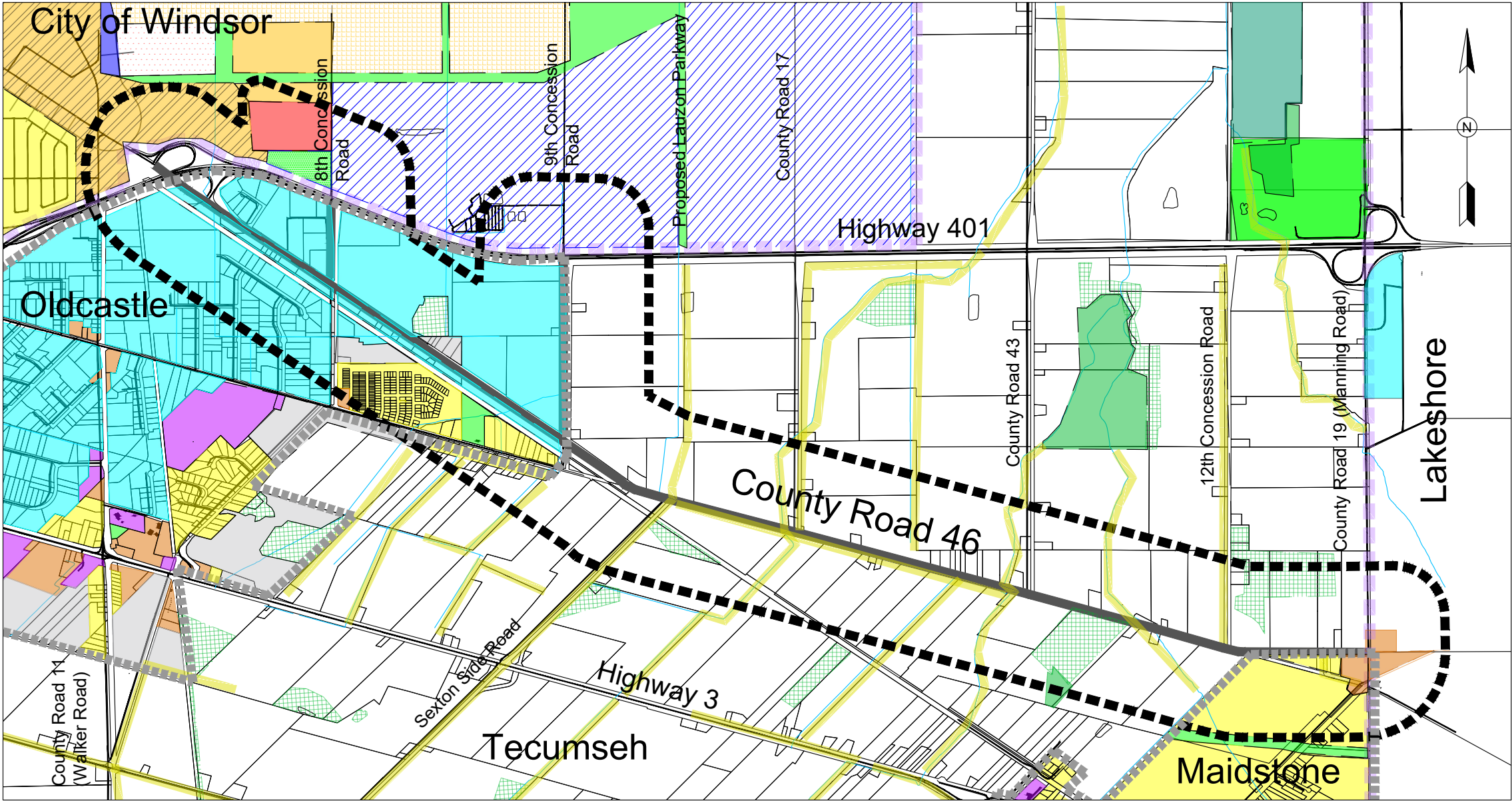
County of Essex Official Plan Designations

- Sources:
- County of Essex Official Plan, 2014:
 - Schedule A2 Settlement Structure Plan
 - Schedule B2 Natural Heritage System
 - Schedule B3 Natural Heritage System Restoration Overlay
 - Schedule C5 Groundwater Recharge Areas



County of Essex County Road 46 and
Town of Tecumseh Concession Roads 8 and 9
Environmental Assessment Study NTS

Official Plan Designations



Legend

Agricultural

Residential

Mixed Use Centre

Mixed Use Corridor

Commercial

Business Park/Employment Area

Future Urban Area

Industrial

Future Employment

Major Institutional

Minor Institutional

Future Development

Open Space/Recreational

Natural Heritage/Natural Environment

Natural Environment Overlay

Restoration Opportunities Overlay

Community Facility

Municipal Boundary

Study Area

Settlement Area Boundaries



County of Essex County Road 46 and
Town of Tecumseh Concession Roads 8 and 9
Environmental Assessment Study NTS

- Sources:
1. Town of Tecumseh Official Plan, adopted February 2021.
 2. City of Windsor Official Plan Volume II Schedule D: Land Use January 15, 2024.
 3. Town of Lakeshore Schedule "C.1" Land Use (Rural Area), 2012

Existing



401 overpass in the west terminus of the Study Area.



View facing east of the Right-of Way of County Road 46 in the Study Area. Residential homes about this portion of County Road 46.

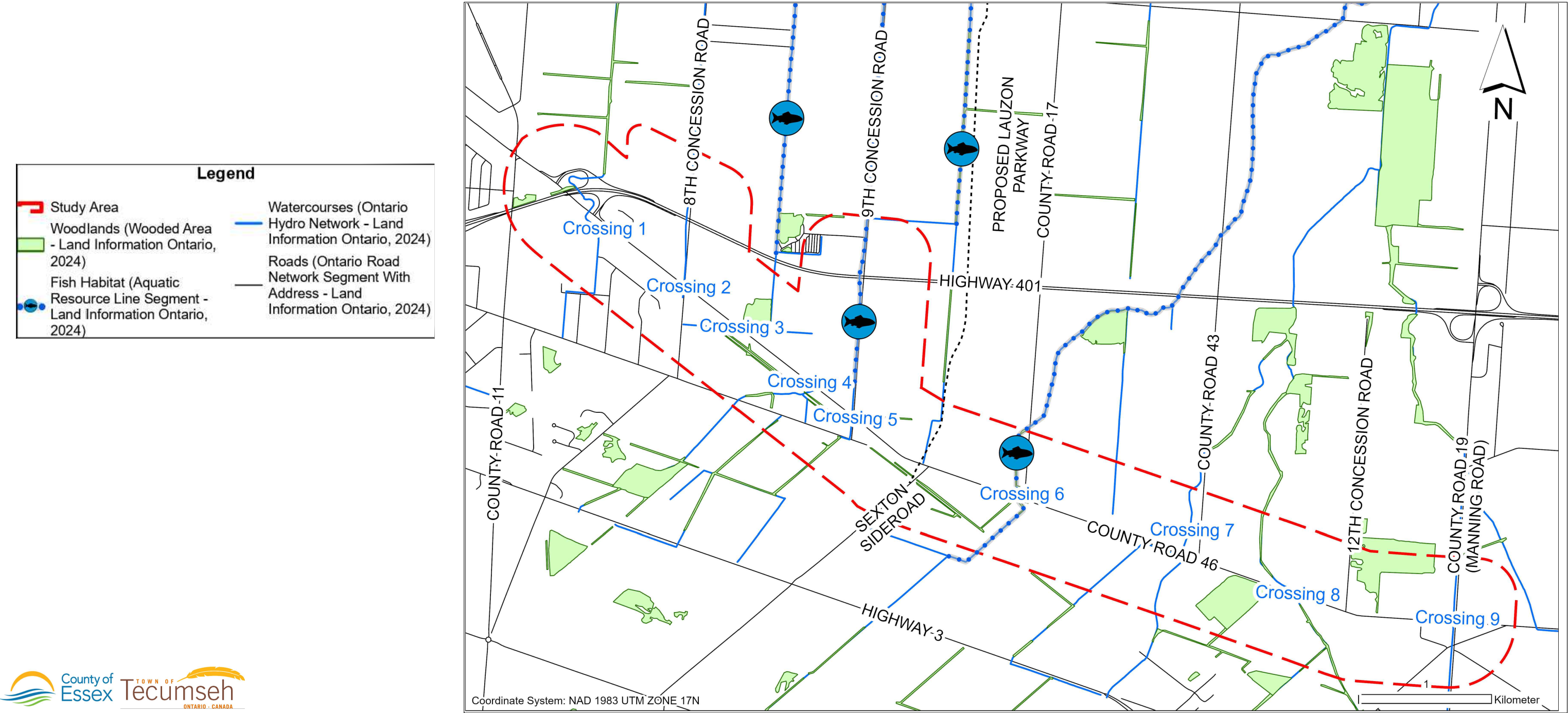


The west terminus of the Study Area is designated Business Park/Employment Area in the Town of Tecumseh Official Plan and is comprised mainly of commercial and industrial businesses along County Road 46.



The predominate land use in the Study Area is Agricultural.

Natural Environment Features



County of Essex County Road 46 and
Town of Tecumseh Concession Roads 8 and 9 Environmental Assessment Study

Existing Conditions - Aquatic Features

The Study Area is located within the Pike Creek and Little River Watersheds. Nine (9) watercourses intersect with County Road 46 within the Study Area limits.

Records available via Aquatic Resource Area Line Segments (ARALS) mapping by Land Information Ontario (LIO) indicate Watercourse Crossings 4, 5, and 6 within the Study Area limits are direct fish habitat, and include accounts of the following fish species:

- Banded Killfish
- Bluntnose Minnow
- Central Mudminnow
- Common Carp
- Creek Chub
- Pumpkinseed
- Flathead Minnow
- Golden Shiner
- Goldfish
- Green Sunfish
- Northern Pike
- White Sucker



Watercourse Crossing 9 runs parallel to County Road 19 and is conveyed under County Road 46.

Existing Conditions - Species at Risk

The following Species at Risk (SAR) have been recorded within the Study Area:

- Blanding's Turtle (Threatened)
- Northern Map Turtle (Special Concern)
- Snapping Turtle (Special Concern)
- Eastern Foxsnake (Endangered)
- Eastern Massasauga (Endangered)
- Butler's Gartersnake (Endangered)
- Eastern Musk Turtle (Special Concern)
- Eastern Wood-pewee (Special Concern)

Species of Special Concern are not afforded protection under the Endangered Species Act (ESA) as they are not yet considered Endangered or Threatened.

The Natural Environment Memorandum is on the Resource Table.

Alternative Solutions

The following alternatives and preliminary assessment are presented for public review and comment.

Alternative Solution 1 - Do Nothing

- The Do Nothing Alternative must be considered as mandated by the Class EA. It represents a baseline from which other alternatives can be compared.
- This alternative would maintain the existing road network and encourage the use of local roads to reduce the demand on County Road 46.

Alternative Solution 2 - Transportation Demand Management (TDM) and Transportation Systems Management (TSM)

- TDM: This strategy would reduce vehicular demand and encourage alternative work hours, work at home, more active modes of transportation (cycling and walking) and the use of transit.
- TSM: More efficient use of existing infrastructure such as traffic signal optimization to limit or avoid the need for expansion.

Alternative Solution 3 - Active Transportation

- This alternative would maintain the existing road network with the addition of bicycle lanes and multi-use pathways within the right-of-way.

Alternative Solution 4 - Roadway Improvements

- This alternative would increase the capacity of the road by considering changes such as additional lanes, turning lanes and intersection improvements.

Next Steps

Following this Public Consultation Centre, we will:

- Review all comments and prepare a Summary Report.
- Second Public Consultation Centre (present Preliminary Design Alternatives and Preliminary Evaluation).
- Third Public Consultation Centre (present Technically Preferred Plan/study recommendations).
- Present recommendations to County and Town Council.
- Study Completion Notice (advertise in local papers and on the County/Town website).
- 30-day public review period of the Environmental Study Report (ESR).
- Future detail design and construction (subject to availability of funding and Council priorities, to be completed as a future stage of the project).

Your Involvement

How can you remain involved in the Study?

- Request that your name/email be added to the Study Mailing List.
- Provide a comment by **April 19, 2024**.
- Contact the County or Town representatives or the Consultant at any time. Contact information is provided below.

Steve Taylor, P.Eng., M.Eng.
Consultant Project Manager
BT Engineering Inc.
Email: stevenj.taylor@bteng.ca
Phone: 519-672-2222

Jerry Behl, P.Eng., PMP, PTOE, RSP1
Manager, Transportation Planning & Development
County of Essex
Email: JBehl@countyofessex.ca

Alessia Mussio, P.Eng.
Engineering Project Manager
Town of Tecumseh
Email: amussio@tecumseh.ca
Phone: 519-735-2184, ext. 140

Thank you for your participation in this Public Consultation Centre.

Your input into this project is valuable and appreciated.

Personal information collected as a result of this PCC is collected under the authority of the *Municipal Act*, the *Municipal Freedom of Information and Protection of Privacy Act* (MFIPPA), the *Planning Act*, and all other relevant legislation, and will be used to assist in making a decision on this matter. All personal information (as defined by MFIPPA), including (but not limited to) names, addresses, opinions and comments collected will be made available for public disclosure to members of the public through requests and through the County of Essex website. Questions regarding the collection, use and disclosure of this personal information may be directed to the Clerk, Essex County Civic; 360 Fairview Avenue West, Essex, ON, N8M 1Y6.