

Design and Construction of County Road 42 and County Road 43 Diversion

Public Open House

Wednesday December 11, 2019

Welcome

Welcome to the Public Open House for the Reconstruction of County Road 42 and County Road 43 Diversion.

Please review the project information on display:

- Project Overview and Phasing;
- Project Timing;
- Project Next Steps;
- Plan View of Roundabout;
- Typical Features of a Roundabout; and
- Construction Coordination.

Please ask the Project Team questions and discuss areas of interest. We encourage you to submit a comment sheet by January 17, 2020.

Project Overview

The design has been completed as per the Environmental Study Reports for both the County Road 42 Class EA (2014) and the County Road 43 Class EA (2009).

The project includes:

- Widening of County Road 42 from County Road 19 (Manning Road) to the City of Windsor limits, consisting of a five lane roadway with bike lanes, sidewalks and/or multi-use trails.
- Multi-lane roundabouts at County Road 19 and the new intersection with County Road 43 (Banwell Road).
- The diversion and widening of County Road 43 from Shields Avenue to south of County Road 42.

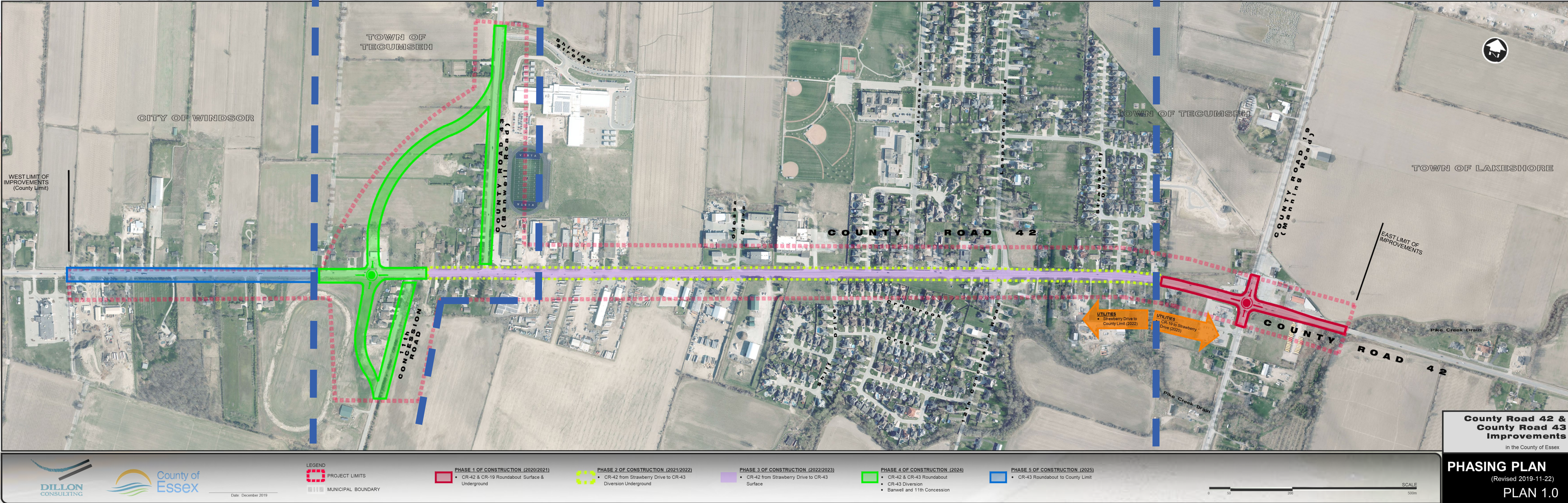
Project Phasing

Phase 5

Phase 4

Phase 2 and 3

Phase 1



Where are we?

2009-2014	Environmental Assessments	County Road 42 EA (2014)	County Road 43 EA (2009)
2017-2019	Detailed Design	Detailed design of the reconstruction of County Road 42	And diversion of County Road 43
2019	Public Open House	December 11, 2019.	Utilities works underway. We are here in the process.
2020-2025	Construction and Civil Works	Utilities works continues to be underway.	Construction for Phase 1 roundabout at County Road 19 and County Road 42 in 2020/2021.

Note: Remaining construction for all phases to follow a staged approach.

Anticipated Project Timing

Phase 1 (2020/2021)	Multi-lane roundabout at County Road 42 and County Road 19 (Manning Road).
Phase 2 (2021/2022)	Underground works on County Road 42 from County Road 19 to County Road 43.
Phase 3 (2022/2023)	Surface works on County Road 42 from County Road 19 to County Road 43.
Phase 4 (2024)	Multi-lane roundabout and diversion at County Road 43 (including Banwell Road and 11 th Concession Road).
Phase 5 (2025)	County Road 42 from County Road 43 to City of Windsor Limits.

Next Steps:

Property Acquisition

Acquisition of property has been initiated and is expected to continue into 2020.

The County will be reaching out to all property owners impacted by this project. However, if you would like to discuss in advance, please contact:

Krystal Kalbol, P. Eng.

Manager, Transportation Planning and Development
County of Essex

Contact Krystal Kalbol by email at kkalbol@countyofessex.ca

Phone: 519-776-6441 ext. 1316

Next Steps: Utilities and Construction

Utilities/Underground Work has commenced and is expected to continue through project phasing.

- Hydro One pole relocations underway.
- Telecommunications (Bell Canada, Cogeco Cable, MNSi) relocations required.
- Enbridge Gas relocation required.

Phase 1 Road Construction and Civil Works –
Summer 2020 (anticipated duration 10 months).

Phase 1

County Road 19 and County Road 42 Roundabout

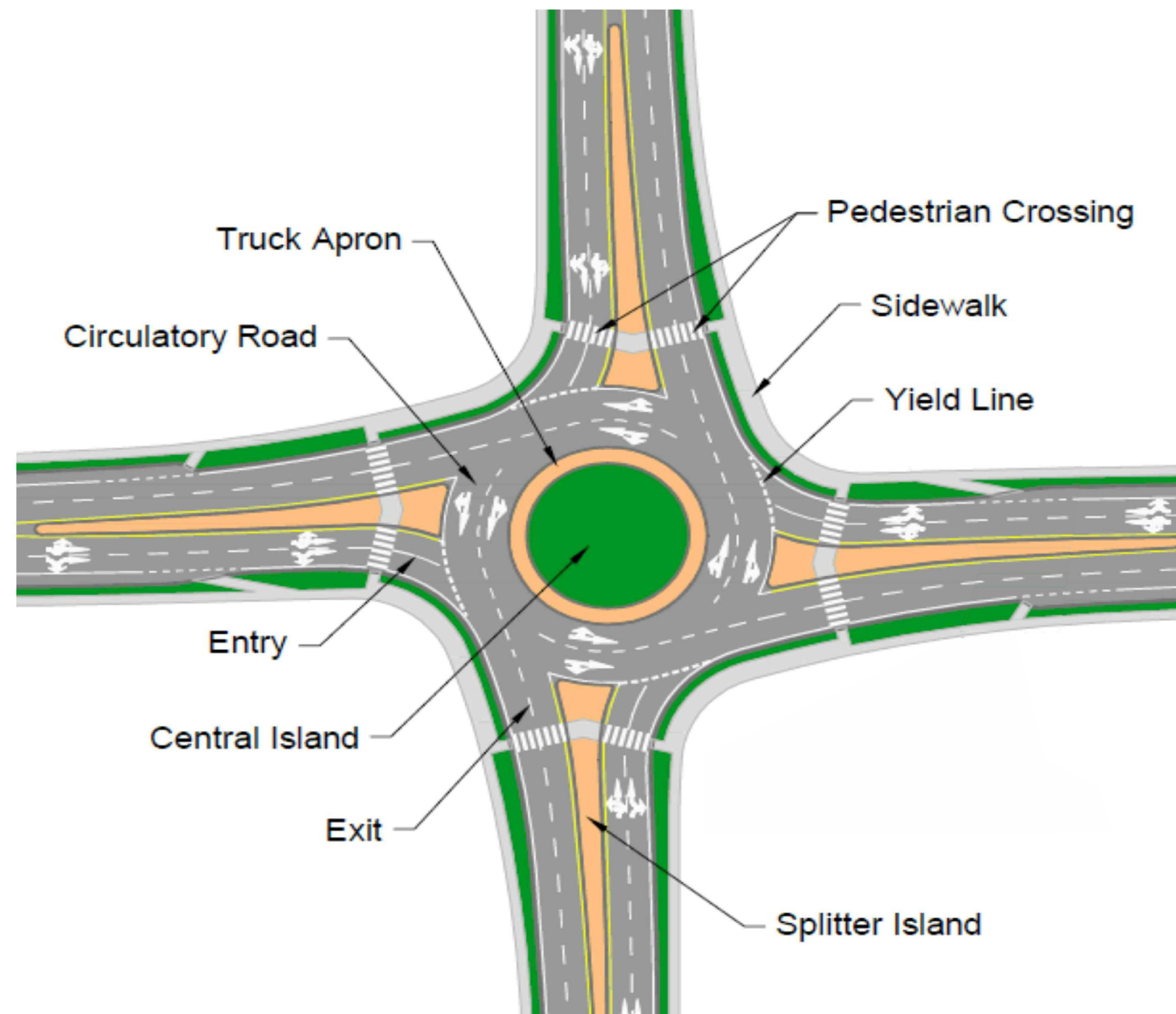


Why a Roundabout?

Introduction of a roundabout will alleviate operational and safety concerns. Benefits of roundabouts include:

- **Improved Safety** – lower speeds, reduction in number and severity of accidents.
- **Improved Traffic Flow** – reduce traffic delay, promotes continuous flow, reduces left turn conflicts.
- **Improved Aesthetics** – allows for landscaped centre island.
- **Improved Pedestrian Access** – introduction of pedestrian crossing.

Features of Typical Roundabout



Features of Typical Roundabout



Multi-lane Roundabout



Multi-lane
Roundabout
Signage



Pedestrian
Crossing



Multi-lane Roundabout
(Splitter island in foreground)



Multi-lane Roundabout

Construction Coordination

- Stakeholder Consultation (communication with EMS, Ambulance, Buses, Police, etc.).
- Communication to public ongoing.
- Traffic delays to be expected.
- Intermittent lane/road closures will be required.
- Detours will be required through construction.
- Access to properties will be maintained.
- Potential for extended working hours to minimize impact.

Thank you for attending!

Please fill out the Comment Sheet provided and share your feedback with our team. Your input is important to us and welcome at any time, but we kindly ask that you complete and submit the form by:

Friday, January 17, 2020

Contact Information

**Peter Bzuik, P. Eng.,
Manager, Design and Construction Services
County of Essex
360 Fairview Avenue West, Suite 315
Essex, Ontario N8M 1Y6
Peter Bzuik email: pbziuk@countyofessex.ca**

**Krystal Kalbol, P. Eng.,
Manager, Transportation Planning and
Development
County of Essex
360 Fairview Avenue West, Suite 315
Essex, Ontario N8M 1Y6
Krystal Kalbol email: kkalbol@countyofessex.ca**

**Nicole Caza, P.Eng.,
Project Manager
Dillon Consulting Limited
3200 Deziel Drive, Suite 608
Windsor, Ontario N8W 5K8
Nicole Caza email: ncaza@Dillon.ca**

**Mark Hernandez, P.Eng.,
Project Engineer
Dillon Consulting Limited
3200 Deziel Drive, Suite 608
Windsor, Ontario N8W 5K8
Mark Hernandez email: mhernandez@dillon.ca**

**For ongoing project information, please visit the County of Essex website.
<https://www.countyofessex.ca/en/resident-services/major-projects.aspx>**