

Welcome!

County of Essex New Official Plan Open House

PURPOSE OF THE OPEN HOUSE

The Official Plan is an important document to guide the County's growth over the next 30 years. Your feedback is crucial to ensure that the Plan reflects the priorities and goals for the future. The Open House will outline key changes proposed for the County's New Official Plan.

PROVIDING FEEDBACK

Write your comments on sticky notes and place them on the appropriate boards. You can submit further feedback with our online form at the following:



What is an Official Plan?

An Official Plan is an important land-use planning policy document that will:



<https://www.countyofessex.ca/en/doing-business/comprehensive-official-plan-review-2021-2023.aspx>

A Successful County

The Official Plan contains key principles supporting the vision of A Successful County, to guide growth and incorporate the priorities of the County, partner municipalities, and the community.



Economic
Resilience



Housing Supply,
Housing Choice, and
Housing Affordability



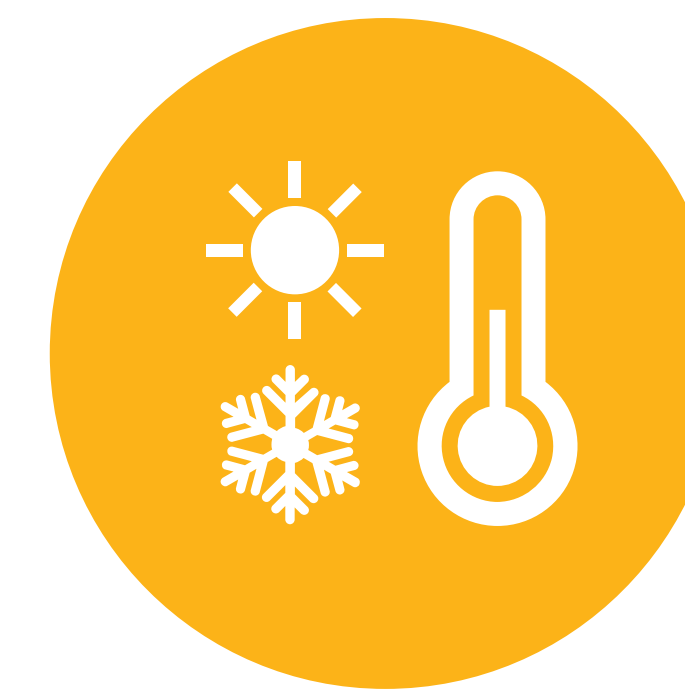
Agricultural
Sustainability



Commitment to
Reconciliation



Environmental
Stewardship



Climate Resilience



Sustainable
Transportation

Together, these principles focus on vibrant places, economic opportunities, more housing, and communities that are safe, walkable, bikeable, and filled with a wide range of activities and services. These places have good schools, libraries, museums, recreational facilities and green spaces that County residents can enjoy year-round.

Growth

It is forecasted that the County will grow by the following from 2021 to 2051:

Population

199,100
in 2021 to
268,100-315,000
in 2051

Jobs

72,300
in 2021 to
107,900-124,000
in 2051

Housing Units

71,395
in 2021 to
101,155-114,425
in 2051

Annual Growth

The County's 2021-2051 growth translates to the following annual projections:

Population

+2,300 to 3,900 People
Per Year

Jobs

+1,200 to 1,700 Jobs
Per Year

Housing Units

+1,000 to 1,400 Units
Per Year

Shaping Growth

It's important to ensure that the County's growth over the next 30 years will create **well-designed, healthy, and complete communities for people of all ages and abilities** through:

Urban Design

Promoting a high standard of excellence and innovation in architecture, landscaping, streetscape, and community design with meaningful public art and placemaking opportunities, and creating great streets, neighbourhoods and districts

Cultural Heritage

Conserving built cultural heritage and archaeological resources

Community Improvement

Redeveloping and rehabilitating industrial sites, providing affordable housing, upgrading infrastructure, creating accessible, walkable, and pedestrian-oriented areas

Healthy and Resilient Communities

Creating compact, walkable, and bikeable communities with a full range of housing types and tenures, and opportunities for local food production

Housing

More housing and more housing choice for residents in Essex County.

- Building a broader range of housing.
- Supporting housing that is built with community amenities such as parks and schools.
- Making sure new housing has access to services such as grocery stores, health services, restaurants, and shopping needs for all residents.
- Improving housing affordability for ownership and rental housing.

Low Density



Lakeshore
59 units per hectare

Medium Density



Amherstburg
44 units per hectare



Kingsville
48 units per hectare

High Density



Tecumseh
91 units per hectare

Jobs

Essex County is committed to supporting job growth across the County.
This includes job growth in the agricultural economy.

- The County's future job growth will be in traditional sectors such as manufacturing (advanced manufacturing, EV supply chain); in the service sector for residents; and in agriculture (agri-tourism and food production, processing and distribution).
- The County is committed to future studies to define "Regionally Significant Employment Lands" – those lands that will be a key focus for all of Essex County to develop for jobs.
- Ensuring jobs are available across the entire County is important to the economic health of all communities.
- Ensuring jobs are available where people live – especially services and commercial needs such as grocery stores – is important to build complete communities.



Transportation

- Support a **multi-modal transportation system** that provides transportation choice, promotes sustainability, and provides for efficient movement of people and goods.
- Promote **vibrant and safe streetscapes**, and **complete streets** that support compact, walkable, and bikeable communities.
- Ensure transportation planning takes into account the **built form, land-use function**, and the **design of road corridors** (for example, a downtown core area versus a rural road).
- Support road design that reflects **the local context and character of the local community**.
- Promote **active transportation and public transit** as sustainable transportation choices.



What are Complete Streets?

“Complete Streets” is a transportation policy and design approach that requires streets to be planned, designed, and operated to enable safe, convenient, and comfortable travel for users of all ages and abilities, regardless of mode of transportation.

Natural Heritage

- Recognize the value of Essex County's natural heritage.
- Build upon past efforts to protect and restore natural areas.
- Protect existing natural features and promote development or preservation of linkages between them:
 - Natural Environment designation identifies lands where development and site alteration are not permitted.
 - Natural Environment overlay identifies lands where development and site alteration require demonstrating there will be no negative impacts on natural features and their ecological functions.
 - Restoration Opportunities overlay identifies potential areas to enhance the fragmented natural heritage system in the County.
- Encourage and support environmental stewardship initiatives and actions by landowners.
- Encourage Local Municipalities to partner with conservation groups, Indigenous communities, landowners, and senior levels of government to create an interconnected natural heritage system.



Agriculture

- Recognize the **importance of the Agricultural System to Essex County** and provide a policy framework to protect the agricultural land base to support a robust, productive and sustainable agri-food sector.
- County to **complete a Specialty Crop** study to identify valuable lands that require additional protection to ensure they can be utilized to their fullest potential for agriculture.
- Recognize the **County Road 50 corridor** as a unique agricultural and agri-tourism area.
- Allow for **economic diversification** that strengthens farm operations and protects lands for long-term use for agriculture.
- **Support sustainable farm practices.** Encourage retention of woodlots and hedgerows and protection of water resources and other natural features as part of farm operations.
- Retain the **cultural landscape of agriculture.**
- **Building up** instead of a business-as-usual approach to protect important agricultural land resources for food production.



Climate Change

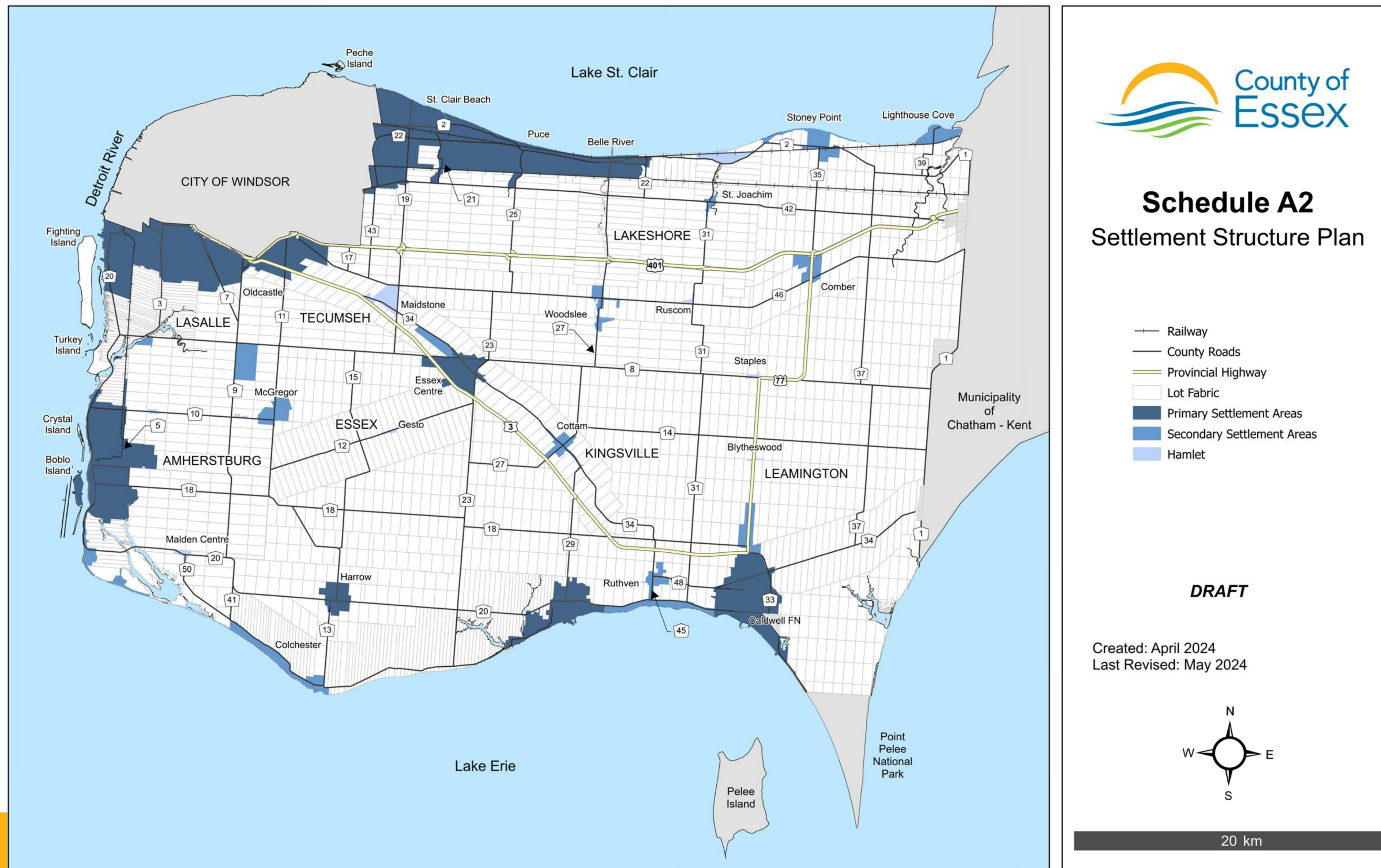
- Plan for **resilient and environmentally sustainable** communities and infrastructure through:
 - transitioning from fossil fuels to renewable and alternative energy systems
 - reducing greenhouse gas emissions
- Align with the recommendations of the **Regional Energy Plan (REP)**
- Support **energy conservation and efficiency**, and **reduced energy demands** in the way we build our communities through:
 - compact, walkable, mixed-use developments
 - energy efficient transportation, buildings, and greenhouses
 - active transportation
 - green infrastructure
 - enhancing and preserving natural areas and features
- Prepare a **climate change adaptation strategy** and support knowledge building of climate risks to inform decision-making
- Making the **necessary capital investments** to protect people and property from more frequent and intense storm events
- **Municipal-wide tree planting programs** to reduce the impact of urban heat islands on the health and well-being of County residents

What is Green Infrastructure?

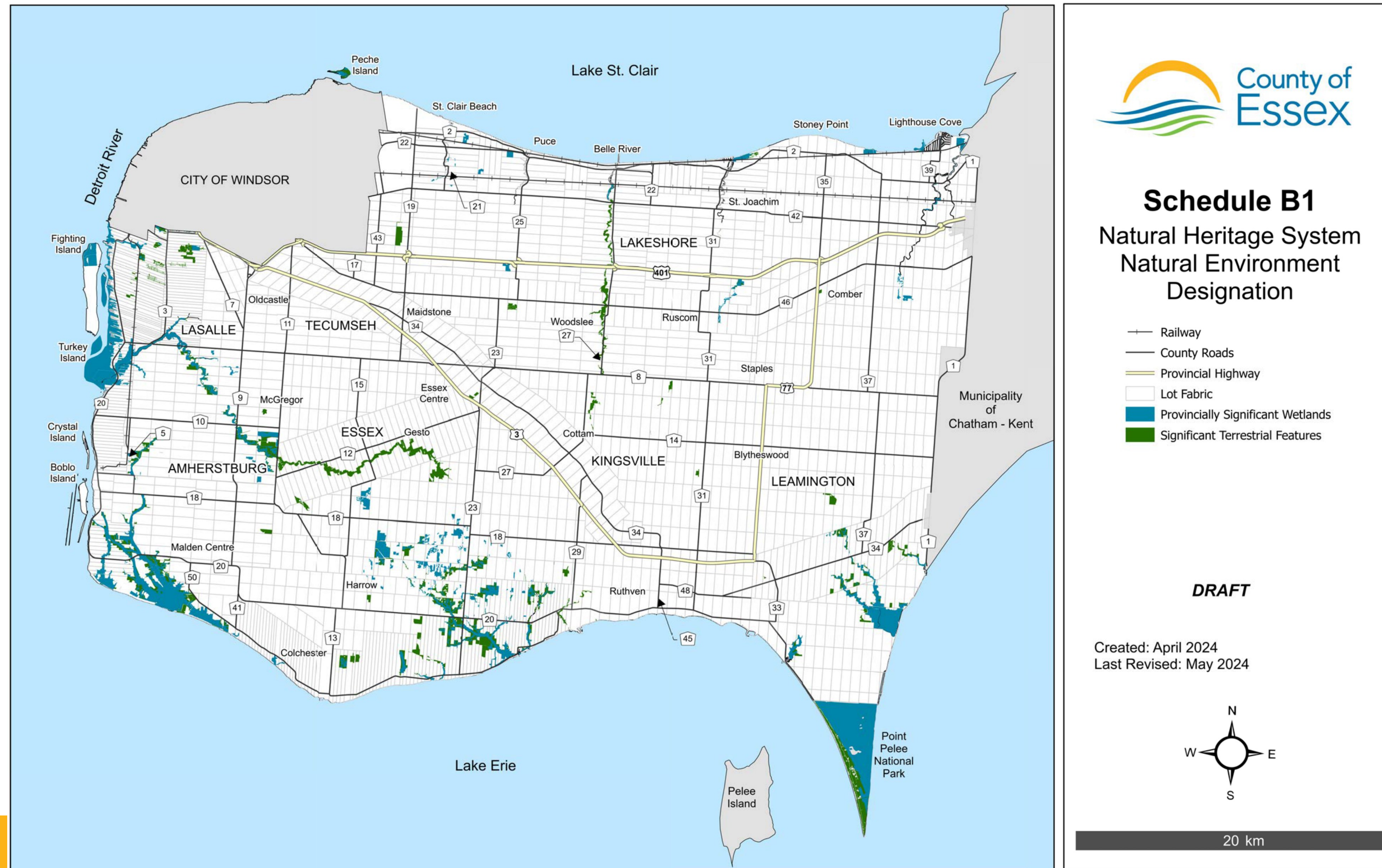
Natural and human-made elements that provide ecological and hydrological functions such as natural heritage features, parks, street trees, and green roofs. They help manage stormwater, improve air quality, reduce temperature, and overall mitigate the impacts of climate change.



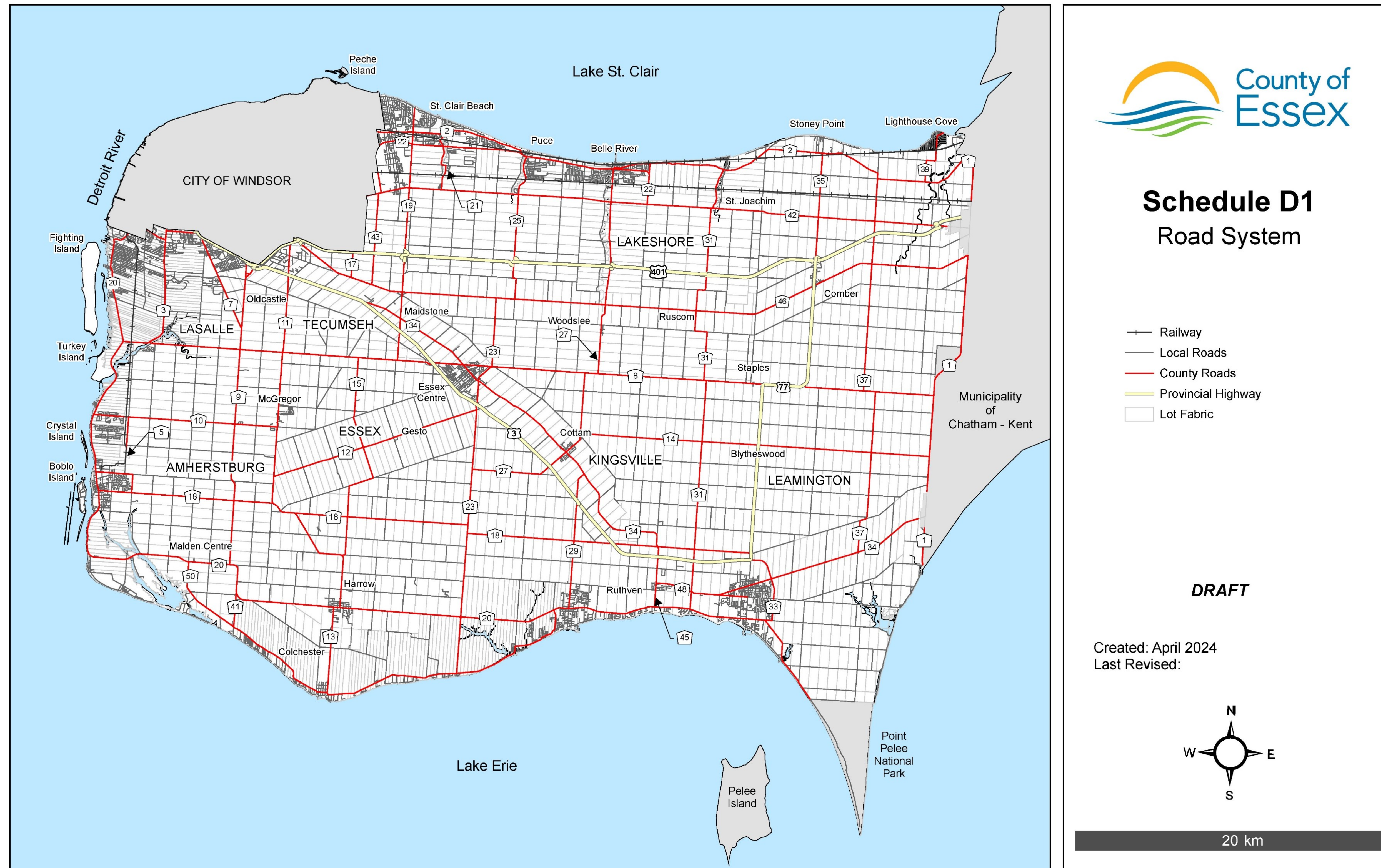
County Structure Map



Natural Heritage Map



County Transportation Map



What's Next?

We will make revisions to the draft Official Plan to address the comments that we've received from residents, staff, Local Municipalities, agencies such as the local conservation authorities, the Province, and more.

A Statutory Public Meeting will be held prior to the adoption of the New Official Plan by Council. Once adopted, the Final Official Plan will be submitted to the Province for Approval.

Thank you for attending the Open House and providing your valuable input!

FOR QUESTIONS OR COMMENTS, PLEASE CONTACT

Rebecca Belanger
Manager, Planning Services
County of Essex
RBelanger@countyofessex.ca

Mary Lou Tanner
President
NPG Planning Solutions Inc.
mtanner@npgsolutions.ca